



Colchester
VERMONT

Malletts Bay Sewer Project Update

May 15, 2024



Announcements

- This meeting is specifically for properties in Colchester who while not in the project area, may need to drive through the project area, or may otherwise be affected by the planned construction work.
- Tonight's meeting is specifically to discuss the advancement of construction of the Malletts Bay Sewer Project. For all other questions related to the project, please contact us at 802-264-5620, or at MBS@colchestervt.gov.
- These slides will be available on the project website: tinyurl.com/ColchesterSewer



Tonight's Agenda

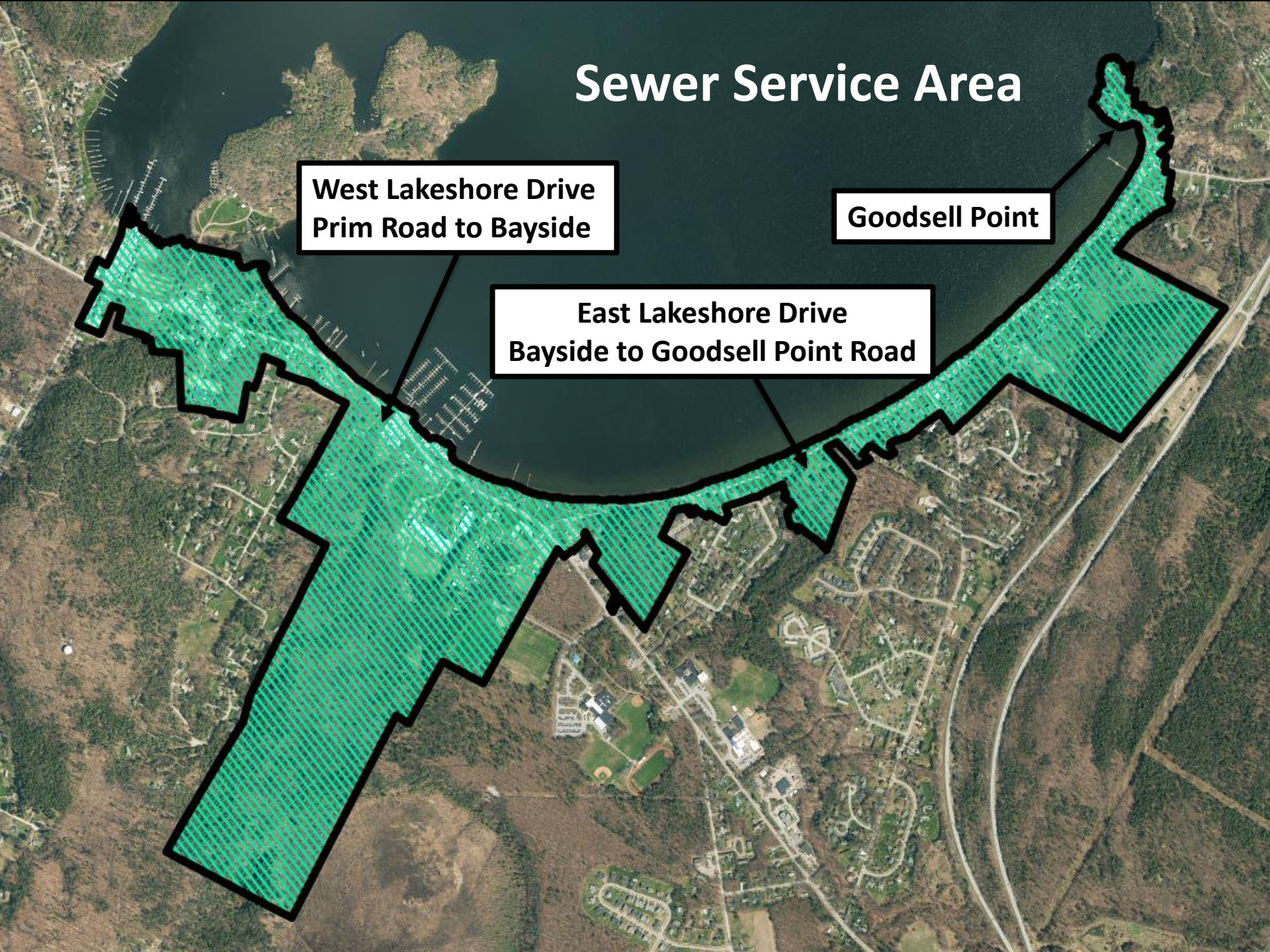
- Service area
- 2024-2025 Construction Work
- Project Schedule
- Traffic Control
- FAQs
- 2025-2027 Construction Work
- Communication Efforts
- Project Contacts
- Questions

Sewer Service Area

**West Lakeshore Drive
Prim Road to Bayside**

Goodsell Point

**East Lakeshore Drive
Bayside to Goodsell Point Road**





Colchester
VERMONT

2024-2025 Construction Work



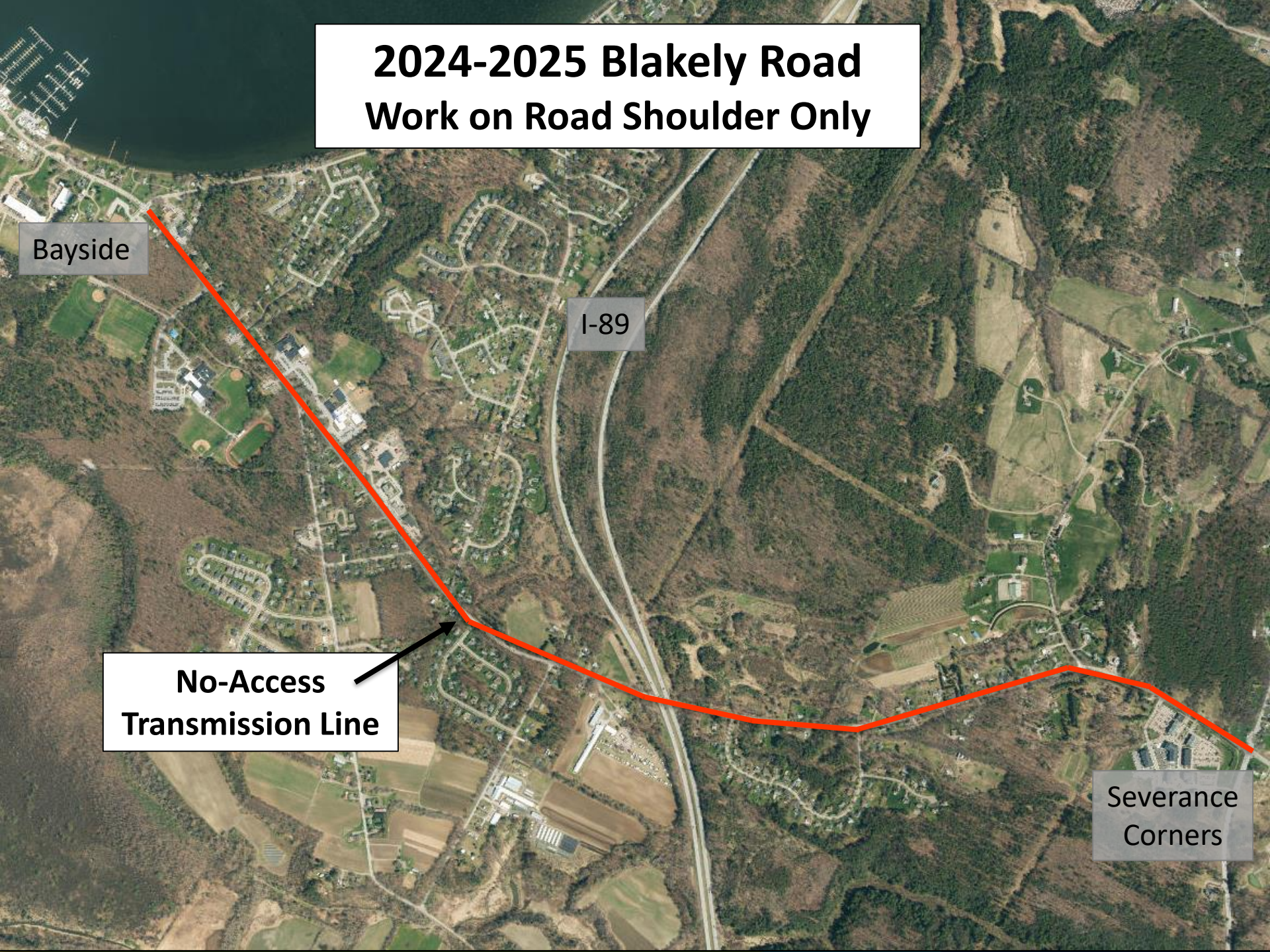
2024-2025 Blakely Road Work on Road Shoulder Only

Bayside

I-89

No-Access
Transmission Line

Severance
Corners



2024-2025 East & West Lakeshore Drive All Work Within Roadway

**Main Collection
Line**

**Bayside
Park**





Colchester
VERMONT

Project Schedule





Project Schedule

Location	Normal Work Hours	Night Work Hours	Estimated Work Period
Blakely Road	M - F 7am - 5pm	N/A	June '24 - May '25
West/East Lakeshore Drive	M - F 7am - 5pm	M – F 9pm - 7am	June '24 - August '25

Winter Shutdown November to April (Estimate)



Traffic Control





Traffic Control: General

General:

- Variable message boards and signage will be used to guide motorists
- Flaggers and Uniformed Traffic Control Officers will be used when needed to maintain the safe and orderly flow of traffic
- Property access, emergency service routes, and pedestrian access to remain at all times
- Observe special requirements for the Colchester School District (Blakely)
- Contractor to submit additional traffic control details for review and approval by the Town prior to work proceeding





Traffic Control: West Lakeshore Drive

Specific requirements:

- Minimum one lane alternating traffic at all times including when work occurs during off peak hours
- Two-way traffic at the end of each work day/period
- Immediate notification to job site of emergency service vehicles



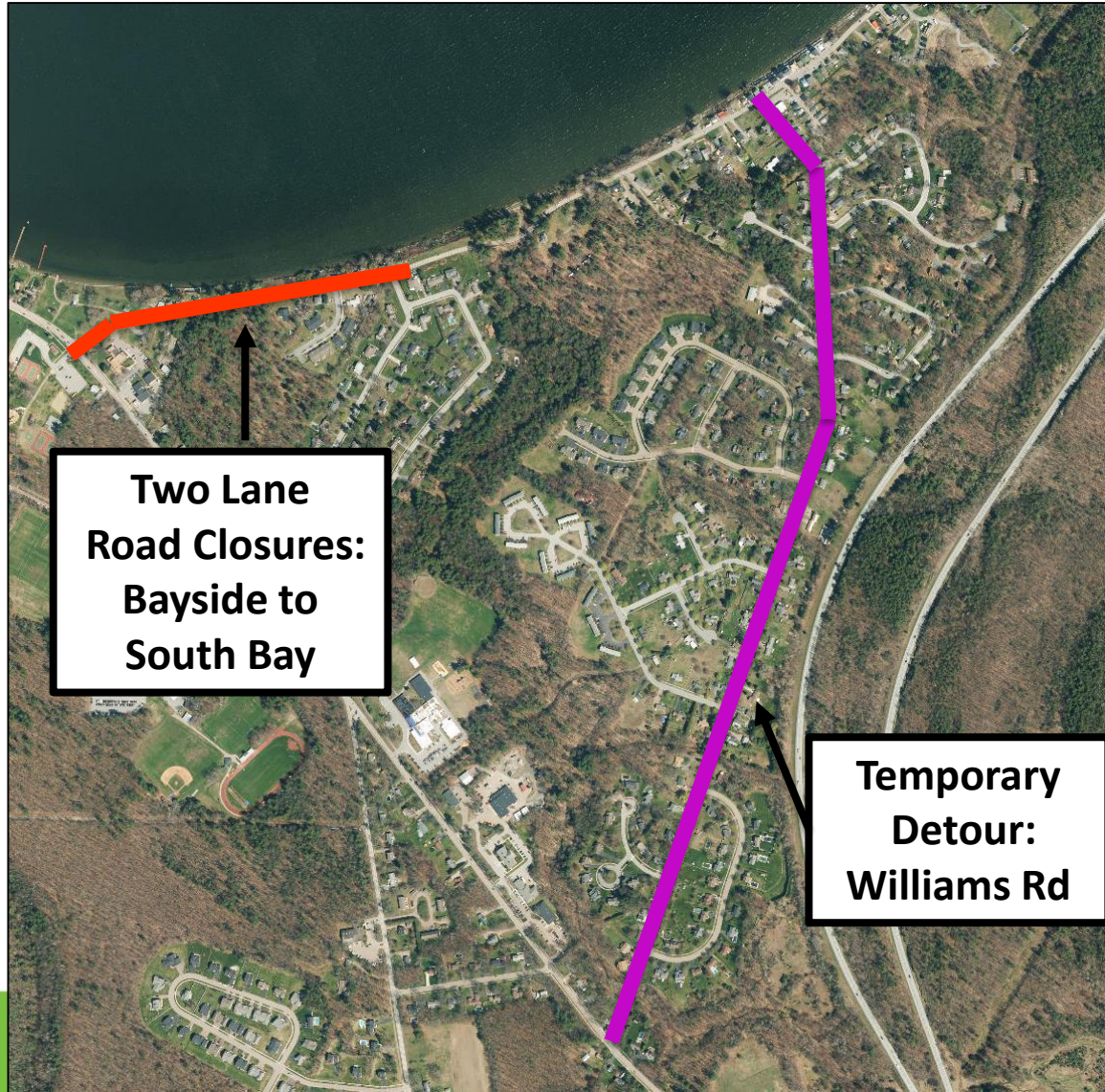


Colchester
VERMONT

Traffic Control: East Lakeshore Drive

Specific requirements:

- Two lane road closures allowed during work day
- Temporary detour on Williams Road during work day
- Accessible to local traffic from at least one direction at all times
- One lane traffic at end of work day with a temporary portable traffic control signal or other approved method





Colchester
VERMONT

Frequently Asked Questions



Colchester
VERMONT

Frequently Asked Questions

1. Will there be traffic congestion and delays?

While we will take every reasonable step to minimize traffic congestion and delays, these will be unavoidable and should be expected and planned for.

2. Will there be noise from the construction work?

Yes, noise from large scale construction projects is unavoidable. Normal work hours will be limited to Monday through Friday from 7:00 am to 5:00 pm. There will also be off-peak hours allowed on West Lakeshore Drive from 9:00 pm to 7:00 am for the installation of service laterals. While we would prefer not to perform work during the evening hours, this is the time of day where the least amount of traffic is on West Lakeshore Drive, including emergency responders.

3. Will there be dust from the construction work?

Yes, dust from large scale construction projects is unavoidable. Contractors will be required to control dust as best they can through the application of dust control agents, but motorists should expect some level of dust through the construction areas.



FAQs

4. Will I be able to get my mail and receive trash service?

We are not expecting any impacts on postal services or trash disposal. We are however coordinating with the US Postal Service and local trash haulers.

5. Will the school buses be able to pick up our children for school?

We are not expecting any impacts to student transportation in your area caused by the project. We are however coordinating with the Colchester School District and their bussing contractor.



FAQs

7. Will there be pot holes and rough roads through the construction area?

Yes, these road conditions are unavoidable during large scale construction projects. The contractor will be required to maintain a driving surface that is as smooth as reasonably possible given the conditions.

8. Will the roadways be repaved following construction?

Yes, during construction disturbed areas in the roadway will be left as gravel. Prior to winter shutdown, temporary pavement will be placed. When all work has been completed permanent pavement will be placed in disturbed areas.



Colchester
VERMONT

2025-2027 Construction Work



2025-2026 East & West Lakeshore Drive, Area 1

All Work on Private Property



The image is an aerial photograph of a lakeshore area. A blue-shaded corridor follows the shoreline, with a bright green line running through its center. This corridor represents the planned route for a new sewer line. Two black arrows point from a text box to specific locations on this corridor. The surrounding landscape includes a large body of water, a marina with many docks, residential houses, and a park area with sports fields.

**Connections to
New Sewer Line**

**Bayside
Park**

2026-2027 East Lakeshore Drive, Area 2

**New Collection Line
(In Roadway)**

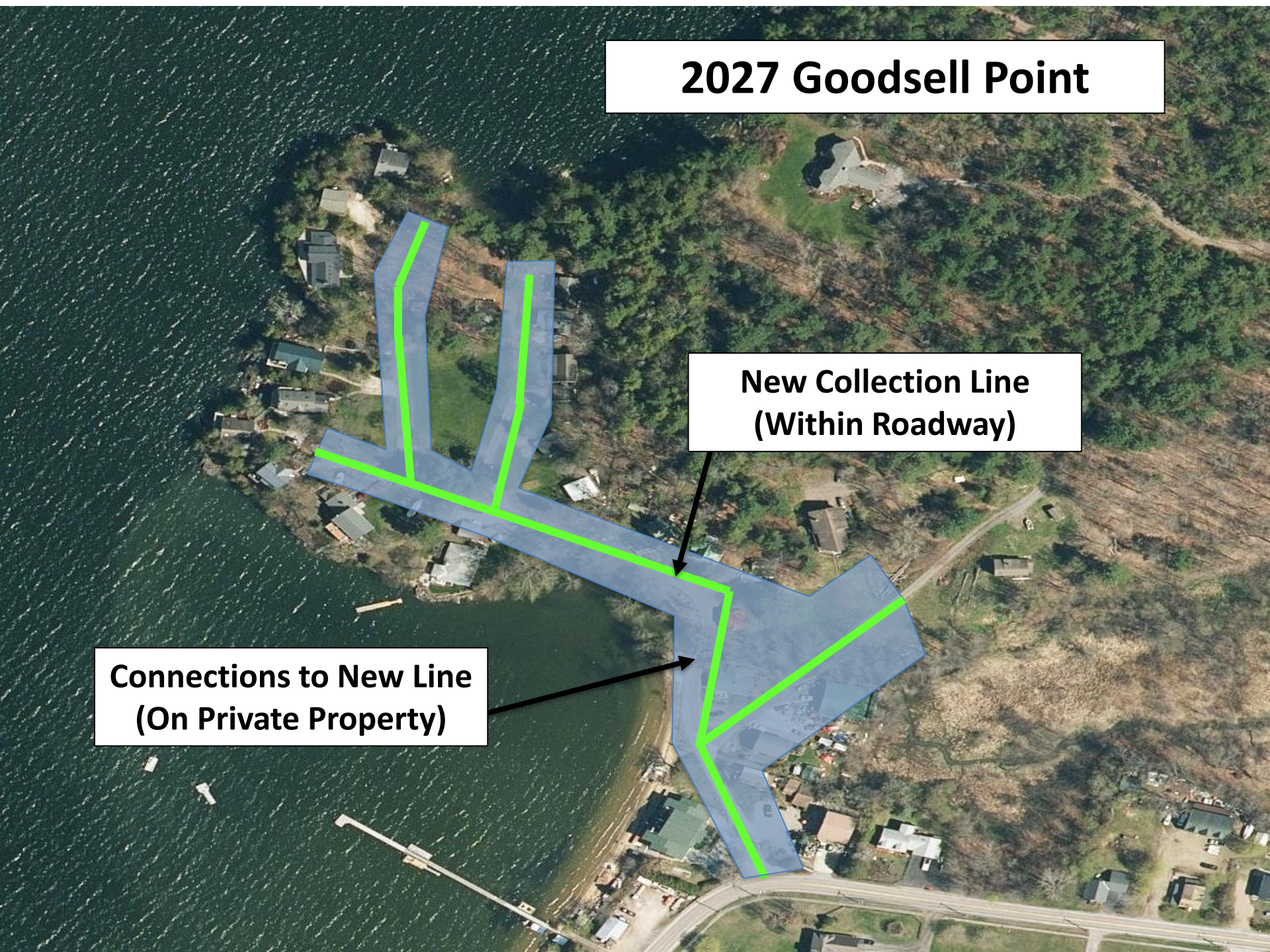
**Connections to New Line
(On Private Property)**



2027 Goodsell Point

**New Collection Line
(Within Roadway)**

**Connections to New Line
(On Private Property)**





Communication Efforts

- Public outreach and communication team formed by Town
- Project Website: **[Tinyurl.com/ColchesterSewer](https://tinyurl.com/ColchesterSewer)**
- Contact numbers for concerns or questions
- Multiple platforms to reach different audiences (social media, newsletters, website, newspaper, Front Porch Forum, brochures)
- Collection of email addresses to facilitate regular project updates
- Coordination with U.S. Postal Service and trash haulers
- Coordination with emergency services & Colchester School District
- Notification to neighboring municipalities
- Use of the Traffic Alert System at CCRPC and VTrans



Project Contact Information

Phone: **802-264-5620 (routine/daytime contact)**
 802-264-5555 (urgent nighttime issues)

E-mail: **MBS@colchestervt.gov**

Web Site: **tinyurl.com/ColchesterSewer**



Colchester
VERMONT



Questions?