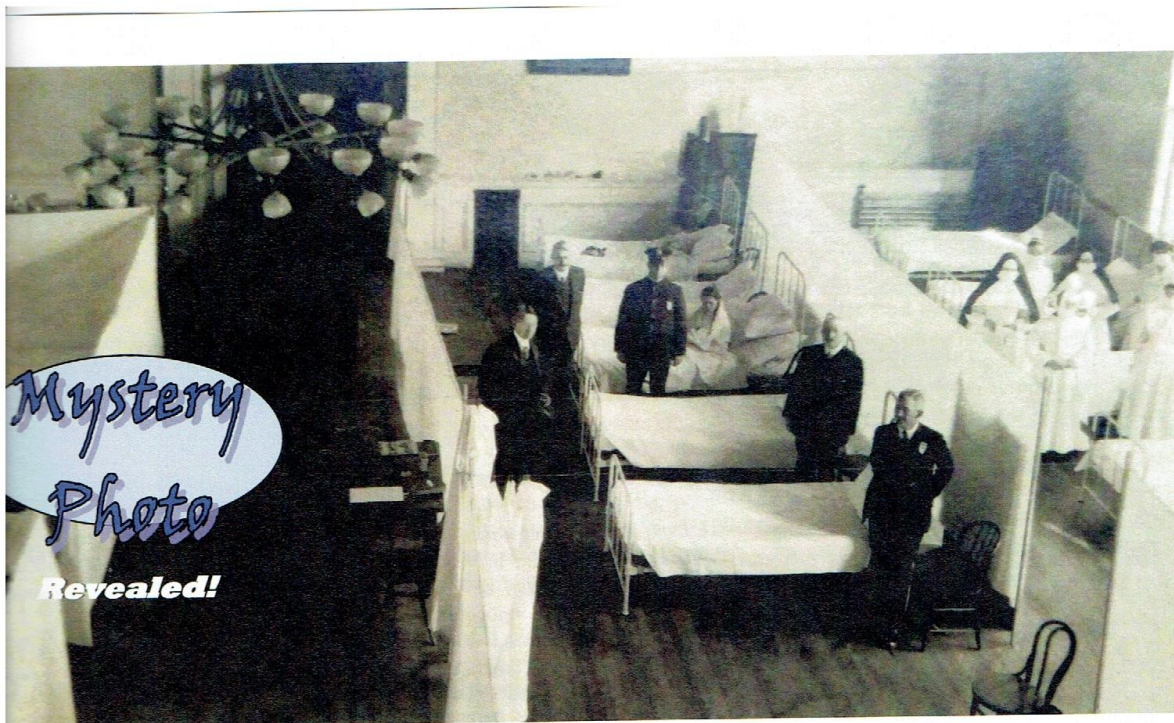


1919 Flu Pandemic

Here is an article from the Winooski Historical Society Newsletter about the 1919 Pandemic.



"One hundred years ago, in late 1918 through 1919, simultaneous with U.S. involvement in World War I, the nation also became stricken by the Spanish Flu Epidemic, one of the deadliest outbreaks of disease in human history. The virus infected nearly 500 million people, about one third of the world's population at the time, killing 50 million world wide and approximately 675,000 individuals in the United States. Winooski, like most other communities, suffered through this pandemic and sought ways to treat residents afflicted with the virus, as well as prevent its rapid spread through the village. In an effort to contain the virus among the many affected, the Winooski High School on East Spring Street (*at left*) was temporarily closed and the auditorium was set up as make-shift infirmary, shown in this postcard image. Care was provided by local physicians, as well as nuns from nearby religious orders. Pictured as nurses are two Religious Hospitalers of St. Joseph (from Fanny Allen Hospital) as well as a Sister of Providence (presumably from St. Louis Convent)."

This photograph comes from the City of Dublin California Heritage Center and is accompanied by a caption noting that the photo was taken in Dublin, California around 1920.

