

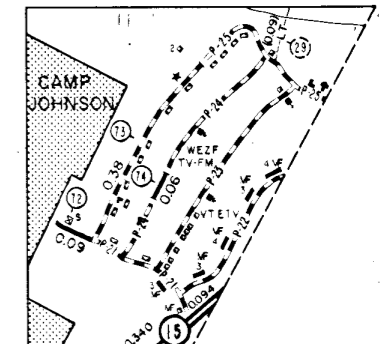
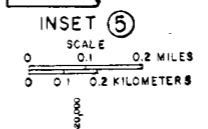
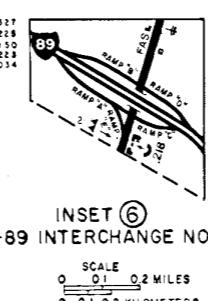
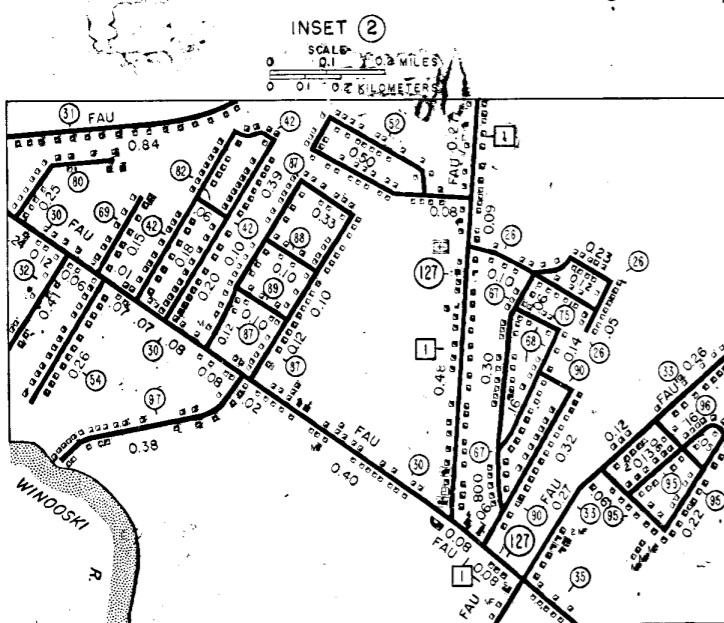
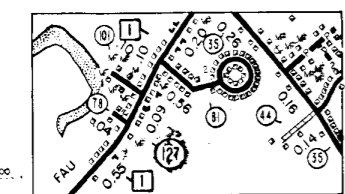
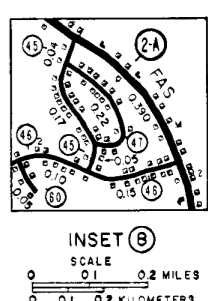
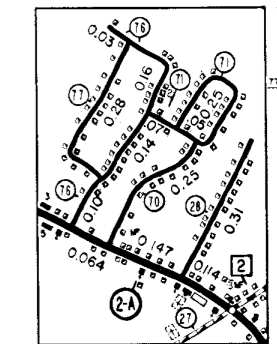
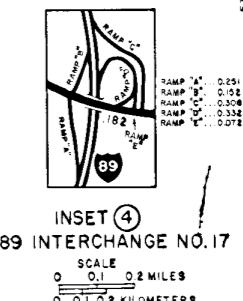
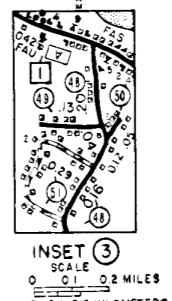
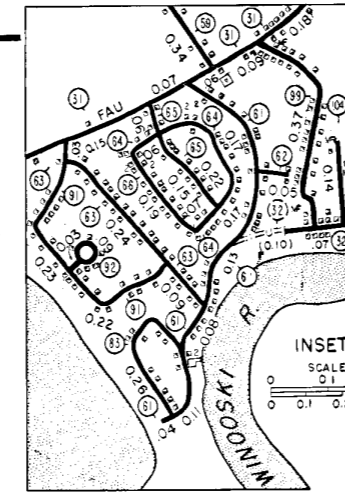
SUMMARY OF TOWN HIGHWAYS

TOWN HWY. NO.	LENGTH IN MILES	CLASS
9	0.65	
10	1.15	
11	0.60	
12	3.05	
13	0.60	
14	0.45	
15	0.40	
16	1.31	
17	0.30	
18	0.91	
19	0.11	
20	0.64	
21	1.10	
22	1.10	
23	0.13	
24	1.05	
25	0.38	
26	1.60	
27	0.31	
28	0.31	
29	1.85	
30	2.00	
31	0.48	
32	1.30	
33	0.80	
34	1.08	
35	0.57	
36	0.98	
37	0.20	
38	0.50	
39	0.77	
40	0.55	
41	0.14	
42	0.26	
43	0.38	
44	0.22	
45	0.13	
46	0.05	
47	0.29	
48	0.58	
49	0.42	
50	0.25	
51	0.37	
52	0.19	
53	0.44	
54	0.30	
55	0.15	
56	0.25	
57	0.37	
58	0.19	
59	0.13	
60	0.25	
61	0.12	
62	0.11	
63	0.12	
64	0.11	
65	0.10	
66	0.10	
67	0.10	
68	0.10	
69	0.10	
70	0.10	
71	0.10	
72	0.10	
73	0.10	
74	0.10	
75	0.10	
76	0.10	
77	0.10	
78	0.10	
79	0.10	
80	0.10	
81	0.10	
82	0.10	
83	0.10	
84	0.10	
85	0.10	
86	0.10	
87	0.10	
88	0.10	
89	0.10	
90	0.10	
91	0.10	
92	0.10	
93	0.10	
94	0.10	
95	0.10	
96	0.10	
97	0.10	
98	0.10	
99	0.10	
100	0.10	
101	0.10	
102	0.10	
103	0.10	
104	0.10	
105	0.10	
106	0.10	
107	0.10	
108	0.10	
109	0.10	
110	0.10	
TOTALS	45.67 (1.51)	

MILEAGE SUMMARY

CLASS 1 TOWN HIGHWAYS:	0.000
CLASS 2 TOWN HIGHWAYS:	
NO. 1	6.73
NO. 2	2.96
NO. 3	3.44
NO. 4	0.21
NO. 5	0.75
NO. 6	2.03
NO. 7	0.45
NO. 8	2.20
NO. 9	2.20
TOTAL CLASS 2 TOWN HWYS.	19.52
CLASS 3 TOWN HIGHWAYS:	45.67
TOTAL TOWN HWYS.	65.190
STATE HIGHWAYS:	
INTERSTATE HWY. NO. 89	7.568
INTERSTATE RAMPS	2.074
TOTAL INTERSTATE HWYS.	9.642
STATE HWY. U.S. 2	2.196
STATE HWY. U.S. 7	6.960
STATE HWY. VT. 2A	2.431
STATE HWY. VT. 15	1.361
STATE HWY. VT. 127	0.142
STATE HWY. COLCHESTER	1.288
TOTAL NON-INTERSTATE HWYS.	14.378
TOTAL STATE HWYS.	24.020
TOTAL TRAVELED HWYS., FEB. 10, 1982.	89.210*

\*EXCLUDES CLASS 4 MILEAGE



**LEGEND**

<b>HIGHWAYS</b>	<b>ROAD SURFACE TYPES</b>
7 DIVIDED HWY., INTERSTATE OR STATE INTERCHANGE NUMBER	BITUMINOUS MIX, MACADAM MIX, MACADAM PENETRATION, CONCRETE
2 2-LANE STATE HIGHWAY	BITUMINOUS CONCRETE, BRICK OR BLOCK
END OF STATE HIGHWAY	SURFACE TREATED GRAVEL
TOWN HIGHWAY	GRAVEL
UNTRAVELLED ROAD	SOIL SURFACE (2ND CLASS GRAVEL)
PRIVATE ROAD AND NUMBER	GRADED AND DRAINED EARTH
DISCONTINUED HIGHWAY	UNIMPROVED EARTH
LEGAL TRAIL (FORMER TOWN HWY.)	PRIMITIVE
FOOT TRAIL	
<b>BRIDGES</b>	
89 INTERSTATE NUMBERED ROUTE	BRIDGE OR CULVERT (LESS THAN 6' SPAN)
22 U.S. NUMBERED ROUTE	BRIDGE OR CULVERT (6' THRU 20' SPAN)
4 STATE NUMBERED ROUTE	BRIDGE (OVER 20' SPAN)
2 CLASS 1 TOWN HIGHWAY	HIGHWAY UNDERPASS
21 CLASS 2 TOWN HIGHWAY	HIGHWAY OVERPASS
6 CLASS 3 TOWN HIGHWAY	COVERED BRIDGE
FCA CLASS 4 TOWN HIGHWAY	B10 BRIDGE NUMBER
FAP FULLY CONTROLLED ACCESS	
FAS FEDERAL AID PRIMARY HIGHWAY	
FAS FEDERAL AID SECONDARY HIGHWAY	
NFH FEDERAL AID SECONDARY ENDS NATIONAL FOREST HIGHWAY	
SFH STATE FOREST HIGHWAY	
<b>MISCELLANEOUS</b>	
RAILROAD AND GRADE CROSSING	
VILLAGE CENTER	
<b>CULTURAL FEATURES</b>	
FARM UNIT	CEMETERY
DWELLING (other than farm)	SANITARY LANDFILL
SEASONAL DWELLING	GRAVEL PIT
MOBILE DWELLING	SUGAR HOUSE
TOWN CLERK'S OFFICE	HALL (T-town, C-community, G-grange, F-fraternal)
BUSINESS	
SCHOOL	
CHURCH	
POST OFFICE	
FIRE STATION	

**GENERAL HIGHWAY MAP**  
**TOWN OF COLCHESTER**

1980 POPULATION: 12,629  
PREPARED BY  
VERMONT AGENCY OF TRANSPORTATION  
PLANNING DIVISION  
SCALE

**NOTES**  
This map was adapted photographically from the County General Highway Map series. The Vermont Coordinate System is shown in 10,000-foot increments. Inventory date of cultural features is 1982. The untraveled highways (laid-out town highways), discontinued highways, and legal trails shown hereon are those of which the Department of Highways has record, others may exist.